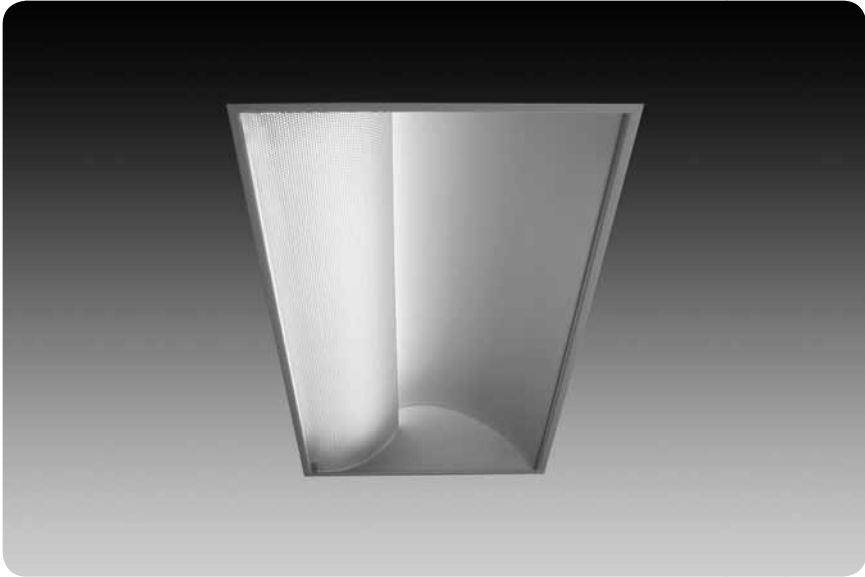


asymmetric  
skylite® 1x2



features

1'x2' recessed asymmetric indirect with perforated side basket.

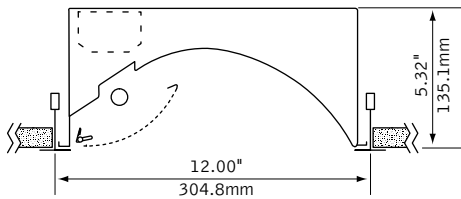
High reflectance, low gloss Matte White finish controls glare and provides high efficiency.

Perforated lamp shield swings down for easy relamping.

All luminaire combinations may be continuously row mounted.

Asymmetric distribution illuminates corridors, conference rooms or any area where high angle vertical illumination is desired.

dimensional data



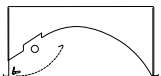
lampping options



BIAX LAMPS



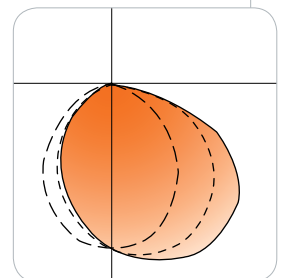
T8 LAMPS



T5/T5H0 LAMPS

performance

1-Lamp 40W BiAx  
56% Efficiency  
754 cd @ 25°



Visit [focalpointlights.com](http://focalpointlights.com) for complete photometric data.

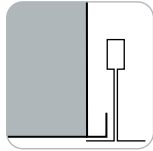
fixture:

project:

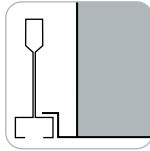
### mounting information

#### grid

specify "G" for flat 9/16" and 15/16" tee or "ST" for 9/16" slot tee grid types.



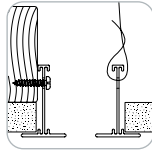
"G" flat tee  
Luminaires cannot be installed in T-bar ceiling systems over 1.5" high in T8 lamp configurations.



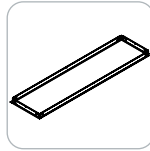
"ST" slot tee

#### drywall frame kit

specify "DF" Drywall Frame Kit for drywall ceiling conditions.



Use tie-wire or screws to secure frame kit.



cut out dimensions:  
1': Min: 12.25"  
Max: 12.563"  
2': Min: 24.25"  
Max: 24.563"

### specifications

#### construction

One-piece 20 Ga. steel reflector and housing.  
22 Ga. perforated shields with white acrylic lens insert.  
Shield is secured by spring latches that allow for easy relamping.

weight: 12 lbs

#### optic

One-piece 20 Ga. steel reflector finished in Matte Satin White powder coat.

#### electrical

Electronic ballasts are thermally protected and have a Class "P" rating.  
Optional dimming ballasts available.  
Consult factory for dimming specifications and availability.  
UL and cUL listed.

#### finish

Polyester powder coat applied over a 5-stage pre-treatment.

### ordering

<b>luminaire series</b>	Skylite	FBX	<u>FBX</u>
<b>nominal size</b>	1' x 2'	12	<u>12</u>
<b>distribution</b>	Asymmetric	W	<u>W</u>
<b>lamp quantity</b>	One Lamp	1	
	Two Lamp	2	
	(T8, T5 & T5HO only)		
<b>lamp type</b>			
	40 Watt Biax	BX40	
	50 Watt Biax	BX50	
	55 Watt Biax	BX55	
	T8	T8	
	T5	T5	
	T5HO	T5HO	
<b>ballast</b>			
	Electronic Instant Start <20% THD	E	
	(T8 & BX40 only)		
	Electronic Program Start <10% THD	S	
	Electronic Dimming Ballast*	D	
<b>voltage</b>			
	120 Volt	120	
	277 Volt	277	
	347 Volt	347	
<b>mounting</b>			
	Grid	G	
	Slot Tee	ST	
	(Not available with 40, 50w Biax)		
<b>shielding</b>			<u>PS</u>
	Perforated Shield	PS	
<b>factory options</b>			
	Air Return	AR	
	Chicago Plenum	CP	
	Dust Cover	DC	
	Drywall Frame Kit	DF	
	(Cut out dimensions: Min: 12.25"/Max: 12.563" Min: 24.25"/Max 24.563")		
	Emergency Battery Pack*	EM	
	Earthquake Clip	EQ	
	HLR/GLR Fuse	FU	
	Flex Whip*	FW	
	Include 3000K Lamp*	L830	
	Include 3500K Lamp*	L835	
	Include 4100K Lamp*	L841	
	Separate Circuit*	SC	
	Separate CircuitTandem*	SCT	
	Labor Saving Master Satellite*	LS	
	Ballast Saving Tandem*	BST	
	Lutron™ Sensor Feed*	SF	
	(EcoSystem ballast required)		
<b>finish</b>			<u>WH</u>
	Matte Satin White	WH	

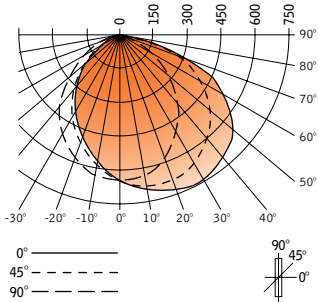
\* for more information see Reference section.

# asymmetric skylite® 1x2



Filename: FBX12W1BX40PS.IES  
 Catalog #: FBX-12-W-1-BX40-E-120-G-PS-WH  
 Efficiency: 56%  
 Test #: 12351.0

## CANDLEPOWER DISTRIBUTION



Vertical Angle	Horizontal Angle				Zonal Lumens
	0°	22.5°	45°	67.5°	
0°	659	659	659	659	659
5°	690	690	684	671	657
15°	732	725	700	666	620
25°	754	735	689	627	556
35°	746	719	652	565	469
45°	709	669	858	475	362
55°	619	584	493	372	245
65°	458	428	362	250	141
75°	206	186	157	106	52
85°	30	27	15	9	4
90°	0	0	0	0	0
95°	0	0	0	0	0
105°	0	0	0	0	0
115°	0	0	0	0	0
125°	0	0	0	0	0
135°	0	0	0	0	0
145°	0	0	0	0	0
155°	0	0	0	0	0
165°	0	0	0	0	0
175°	0	0	0	0	0
180°	0	0	0	0	0

## LUMINANCE DATA (CD/M²)

	Zone Lumens	% Lamp	% Fixt
0°-30°	509	16.2	28.7
0°-40°	829	26.3	46.6
0°-60°	1448	46.0	81.5
0°-90°	1777	56.4	100.0
<b>Total Luminaire</b>	<b>1777</b>	<b>56.4</b>	<b>100.0</b>